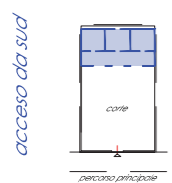


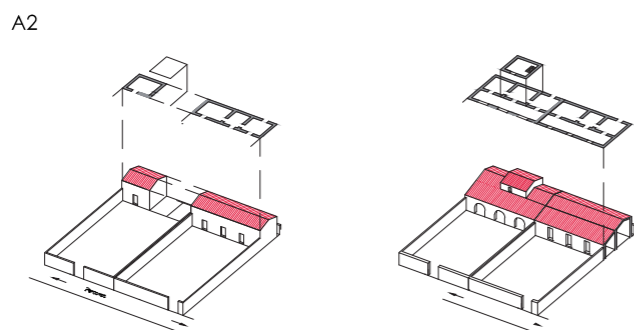
TIPI EDILIZI STORICI O PREMODERNI

A2 - Tipo edilizio a corte antistante - Sviluppo diacronico

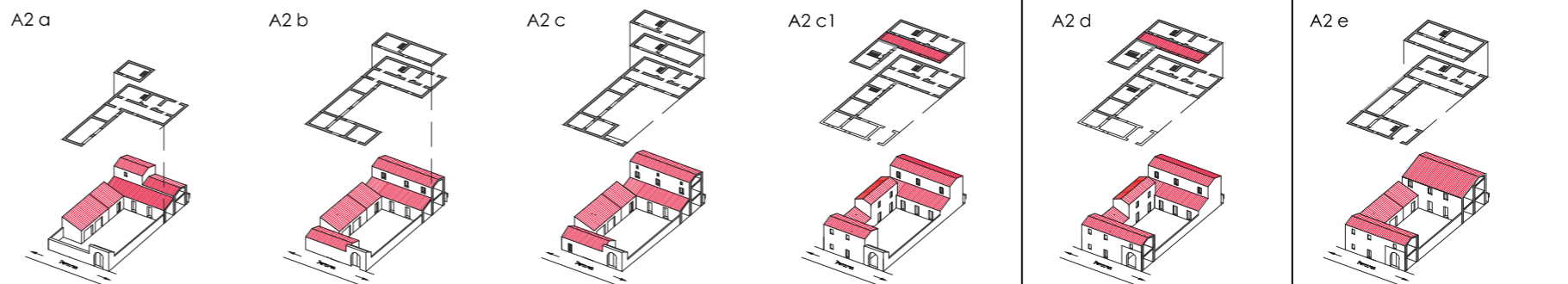
posizione seriale aperta



TIPI BASE MATRICE



VARIANTI RICORRENTI

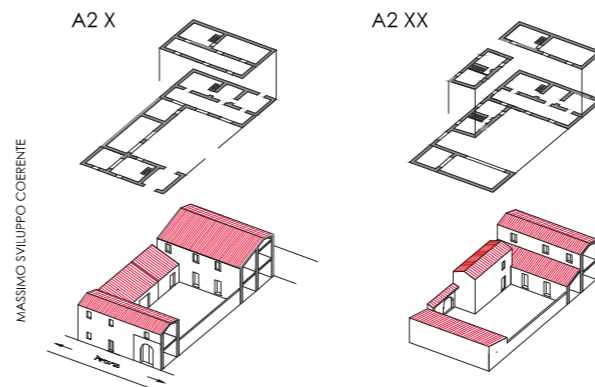
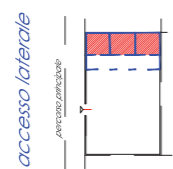


A2 - Tipo edilizio a corte antistante - Varianti di posizione

su strade contrapposte

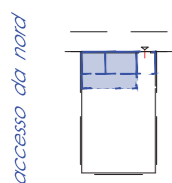


A2-2

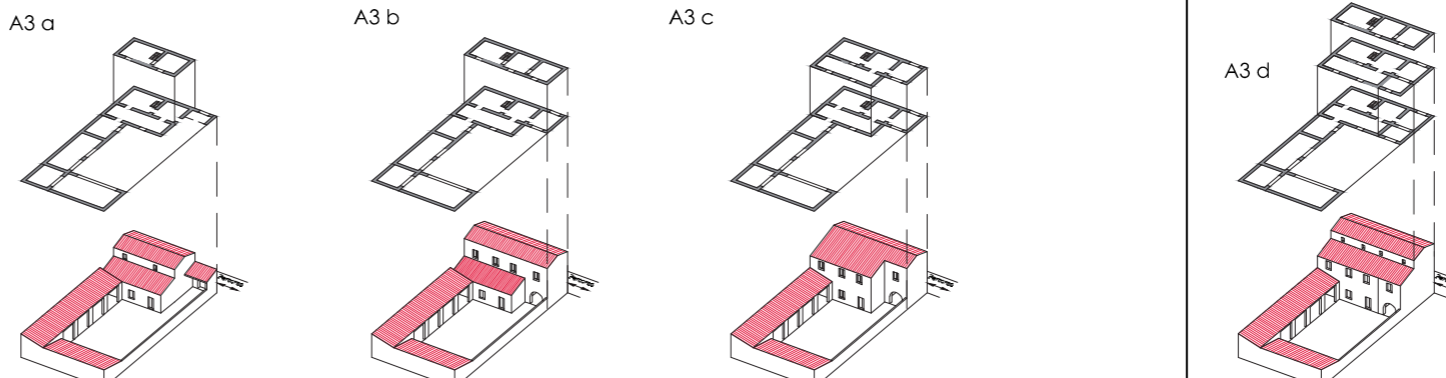
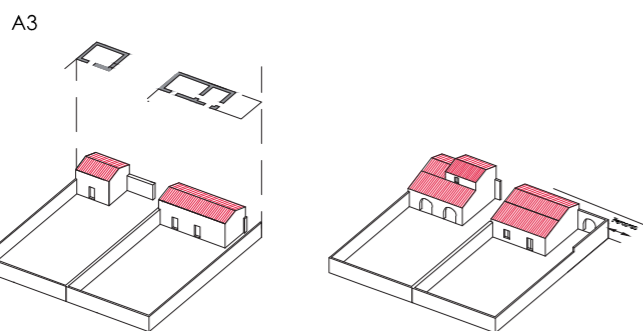


A3 - Tipo edilizio a corte doppia - Sviluppo diacronico

posizione seriale chiusa

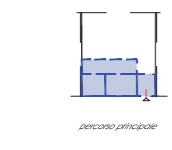


TIPI BASE MATRICE



B - Tipo a palazzo - palazzo - villa storica - Sviluppo diacronico

posizione seriale chiusa



PALAZZOTTO INDIPENDENTE E PALAZZO SIGNORILE

